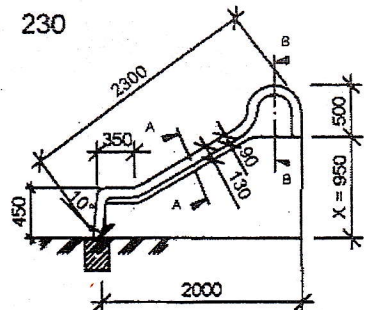
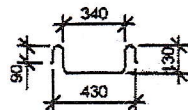


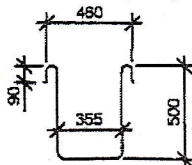
R 230



REZ A - A

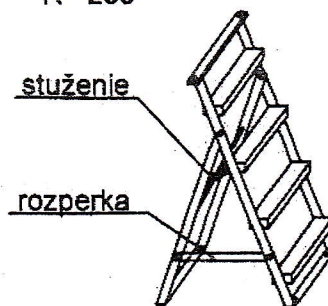


REZ B - B



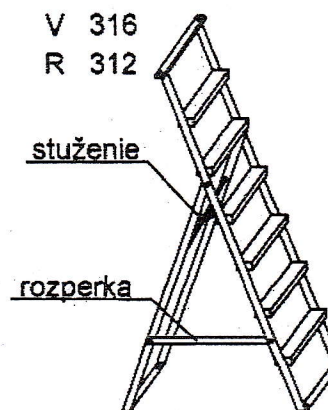
Konšt. schodíkov

R 230

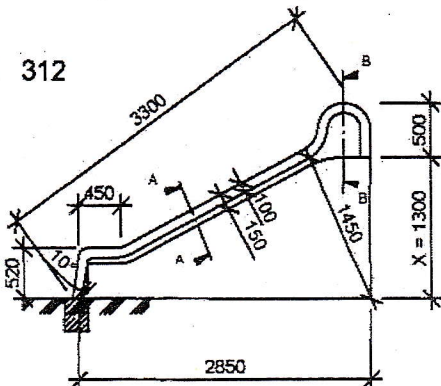


V 316

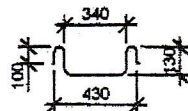
R 312



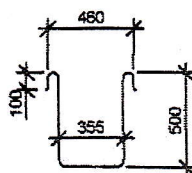
R 312



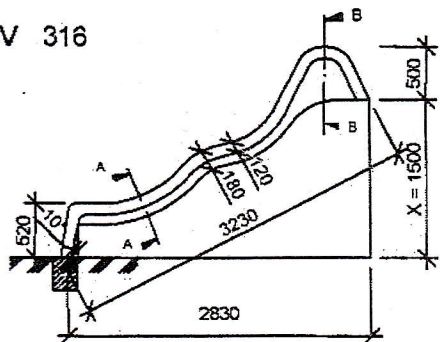
REZ A - A



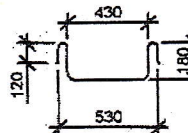
REZ B - B



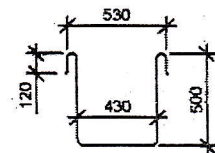
V 316



REZ A-A



REZ B - B

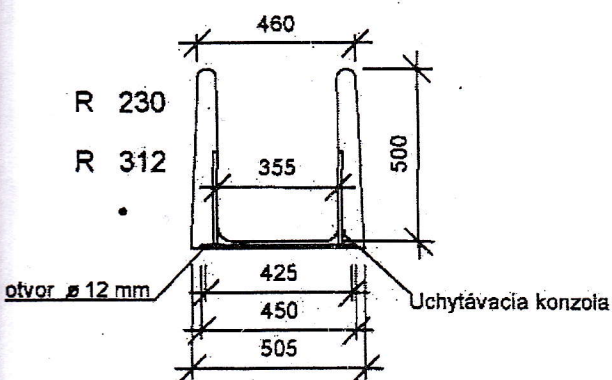


$X = 950, 1300, 1500$ - nástupné výšky

Umiestnenie úchyt. konzoly

R 230

R 312



V 316

